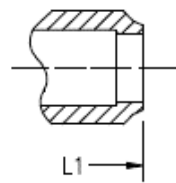
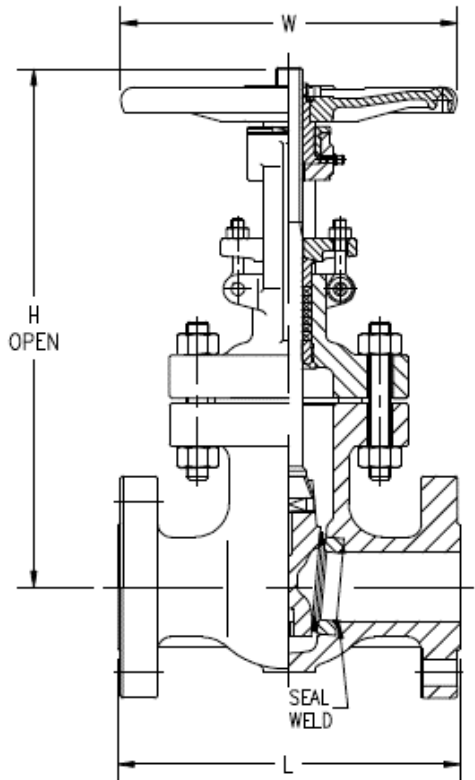
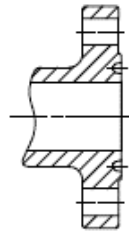


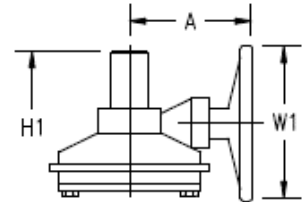
## 150#. Gate Cast Steel Valve



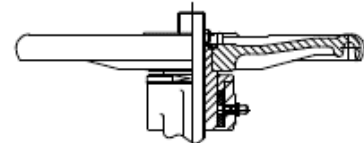
L1  
BW END



L2  
RTJ END



GEAR OPERATOR FOR 10" AND LARGER\*



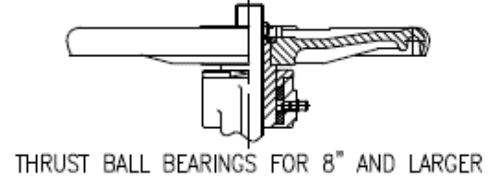
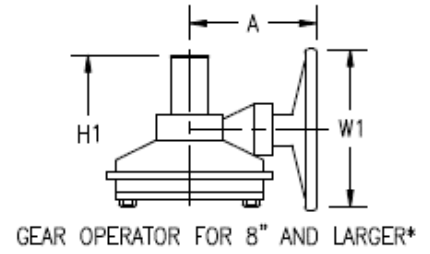
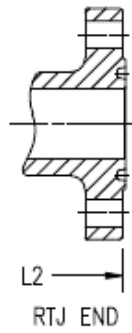
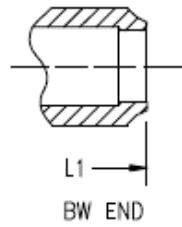
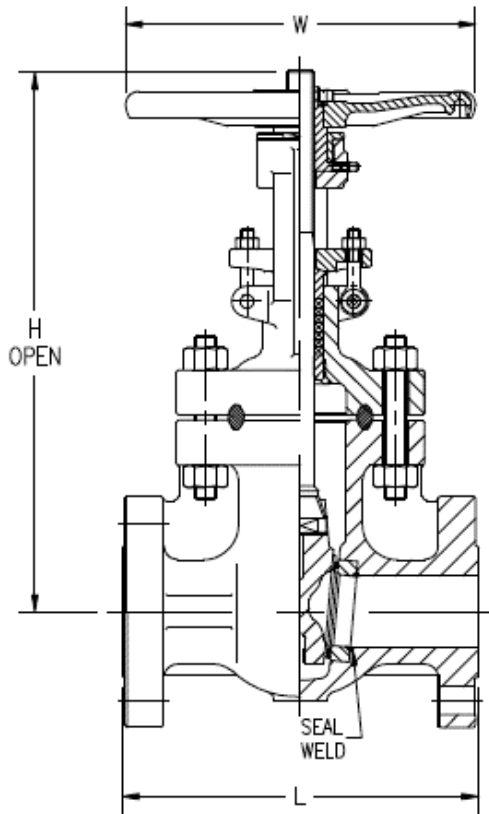
THRUST BALL BEARINGS FOR 8" AND LARGER

\* WHEN REQUESTED

<b>150# ib. Gate Cast Steel Valve</b>															
Size	mm	50	65	80	100	130	150	200	250	300	350	400	450	500	600
L	mm	177.	190.	203.	228.	254	266.	292.	330	355.	381	406.	431.	457.	508
L1	mm	215.	241.	282.	304.	381	403.	419.	457	501.	571.	609.	660.	711.	812.
L2	mm	190.	203.	215.	241.	266.	279.	304.	343	368.	393.	419.	444.	469.	520.
W	mm	200	200	250	250	250	300	350	400	500	500	600	640	650	750
W1	mm							305	305	305	305	310	460	460	460
H (Open)	mm	423	495	520	596	711	759	995	1180	1432	1535	1811	2009	2230	2641
H1 (Gear)	mm							1070	1289	1509	1614	1840	2012	2180	2560
A	mm							220	220	220	360	360	360	411	411
WT (RF)	kg	21	28	36	53	60	84	139	201	320	430	548	744	1117	1466
WT (BW)	kg	18	21	30	44	54	76	126	179	303	398	509	710	1077	1462
WT (RF & GO)	kg							161	223	342	450	568	774	1147	1456
WT (BW & GO)	kg							148	201	325	418	529	740	1107	1456



## 600# lb. Cast Steel Gate Valve



\* WHEN REQUESTED

<b>600# lb. Cast Steel Gate Valve</b>									
Size	inch mm	2 50	2.5 65	3 80	4 100	5 130	6 150	8 200	10 250
L	mm	292.1	330.2	355.6	431.8	508	558.8	660.4	787.4
L1	mm	292.1	330.2	355.6	431.8	508	558.8	660.4	787.4
L2	mm	295.15	335.25	358.65	435.85	511.05	561.85	663.45	790.45
W	mm	250	250	250	350	400	450	500	600
W1	mm						305	460	610
H (Open)	mm	465	532	555	685	795	910	1145	1268
H1(Gear)	mm						1155	1175	1330
A	mm						240	260	320
WT (RF)	kg	41	57	72	128	200	266	419	754
WT (BW)	kg	34	47	58	99	155	209	336	616
WT (RF & GO)	kg						288	449	804
WT (BW & GO)	kg						231	366	666